



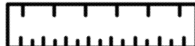
# A CROWN OF WORDS

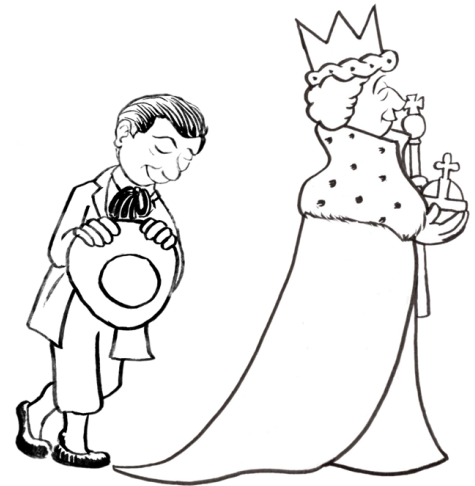
**Task 1.** Read closely and carefully the etymology of the word *reign*.

## EXTRAORDINARY ETYMOLOGY

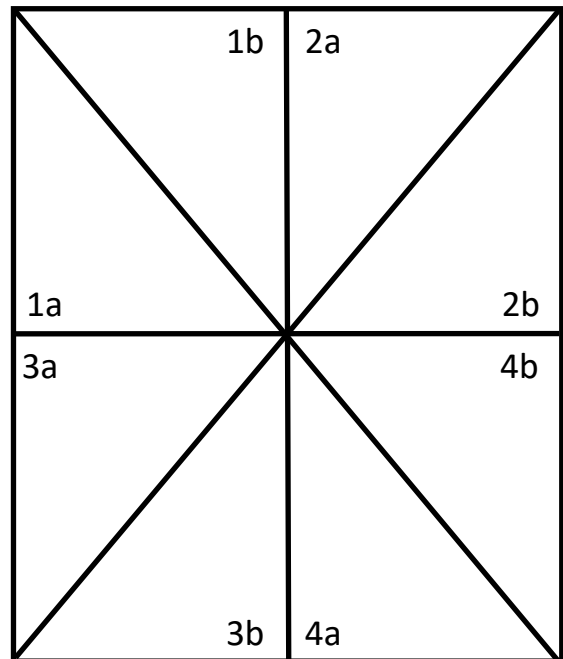
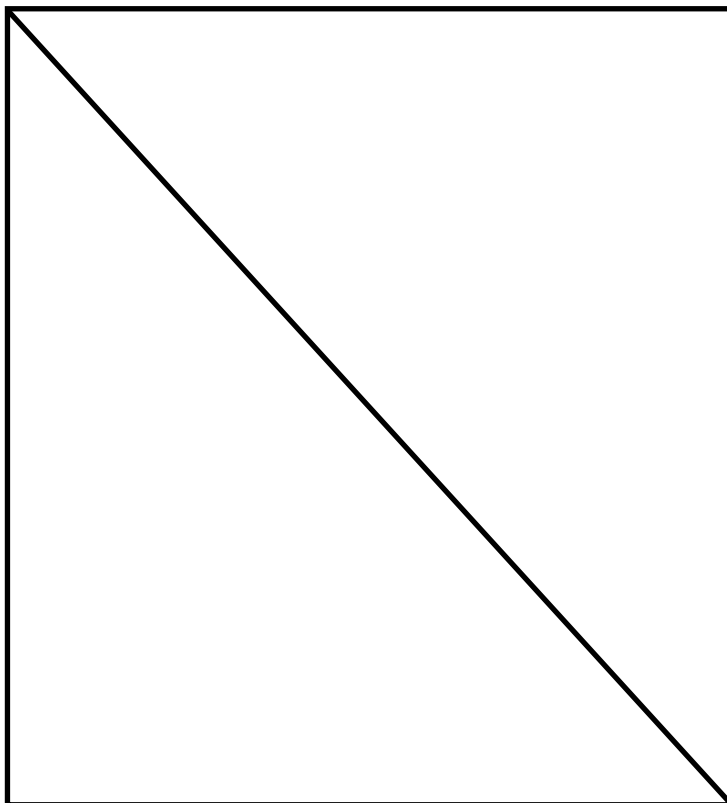
The word *reign* means to 'be king or queen of a country' and 'to rule over people for a period of time.' The word comes from the Latin root *reg* meaning 'to move in a straight line'. Other words with this root include *regular* and *regiment*. Think about it, kings and queens of the past had to make sure that people behaved in line with the rules. If you didn't, you could be locked in a tower or beheaded.

Whilst kings and queens don't rule like this today, if you have ever seen the King's regiment march they walk in straight, regimented lines, just like their name suggests.

Why is this called a ruler? 



**Task 2.** Draw and label two pictures to show the different meaning of the words *reign* and *rain*.



**Task 3.** Can you find the correct word and match the pattern?